

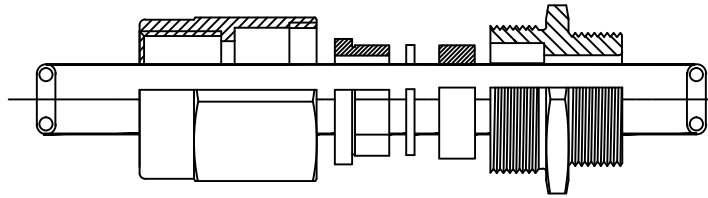
DRG. No.
PCG/DEV/UFCON

DO NOT SCALE OFF DRAWING "IF IN DOUBT ASK".
REPORT ALL ERRORS AND ALTERATIONS.

THIRD ANGLE PROJECTION

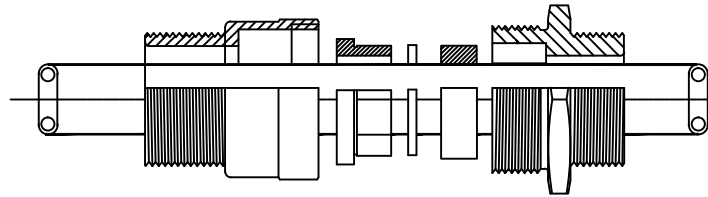
DRAWN	RJW
DATE	13/03/12
CHECKED	
APPROVED	
CAD REF	
SCALE	N.T.S
ISSUE	
1.	Draft

TYPE A8xF CABLE GLAND
WITH FEMALE CONNECTOR



Options to be available with: -
M20x1.5p & M25x1.5p entry threads
M20x1.5p & M25x1.5p connector threads

TYPE A8xF CABLE GLAND
WITH MALE CONNECTOR



Options to be available with: -
M20x1.5p & M25x1.5p entry threads
M20x1.5p & M25x1.5p connector threads

X-REFS: -

PART NO IS: BASIC TYPE/SIZE (/ENTRY THREAD)
ALL DIMENSIONS ARE IN MILLIMETERS, U.O.S.
ALL DIAMETERS TO BE CONCENTRIC WITHIN 0.25 TIR.
ALL BURRS AND SHARP EDGES TO BE REMOVED.
TOLERANCES ±0.2mm UNLESS OTHERWISE STATED.



PEPPERS CABLE GLANDS LIMITED
STANHOPE ROAD, CAMBERLEY, SURREY, UK.
TEL +44 (0)1276 64232, FAX +44 (0)1276 691752

TITLE A8*F CABLE GLAND
CONNECTOR THREAD DEVELOPMENT
PART CODE: TBC.

THIS DRAWING IS OF A CERTIFIED COMPONENT, AND NO CHANGES MUST BE MADE WITHOUT REFERENCE TO THE CERTIFYING AUTHORITY.

The design and manufacturing information contained
in this drawing is the exclusive right of PEPPERS
CABLE GLANDS LTD and must not be copied or used
for manufacturing purposes without express authority
in writing from the said company.

DRG. No.	PCG/DEV/UFCON
ISSUE	1