

ABJB Range

15kV

Based on the HVJB range but suitable for up to 15kV, the ABBJ can accept up to 4 phase connections either straight through or bottom entry only. The unit can accommodate up to three connectors per phase.



- Fault rated 45kA for 1 second
- DTS-01 deluge tested enclosure
- Wide ambient temp range
- Heavy duty machined hinges with lift off cover pad-lockable cover

Enclosure Ratings

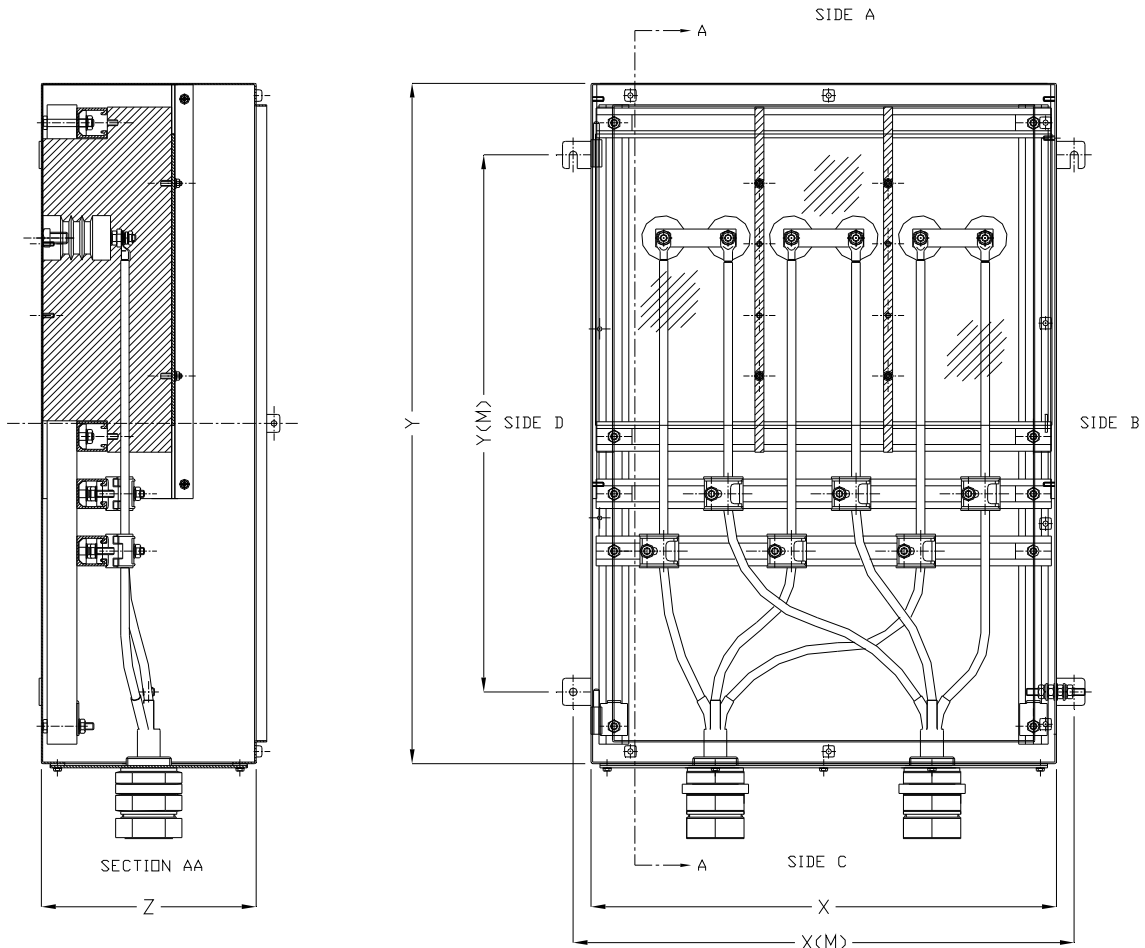
Product Reference*	Width (mm)	Height (mm)	Depth (mm)	Maximum Power Rating (W)	Maximum Voltage (kV)	Maximum Current (A)	Maximum Conductor Size (mm ²)	Maximum Ways	Weight (kg)
ABJB-72(x-x)	650	950	300	259	15	980	1000	2	60
ABJB-73(x-x)	650	950	300	259	15	980	1000	3	60
ABJB-74(x-x)	650	950	300	259	15	980	1000	4	60
ABJB-82(x-x)	800	1250	300	346	15	980	1000	2	97
ABJB-83(x-x)	800	1250	300	346	15	980	1000	3	97
ABJB-84(x-x)	800	1250	300	346	15	980	1000	4	97

* (x-x) denotes the number of connectors per phase, 1st position = top, 2nd position = bottom. For example: ABBJ73(2-1) = 2 x conductors per phase top entry and 1 x conductor per phase bottom entry.

Standard Specifications

Enclosure Type	High Voltage
Ingress Protection	IP66 to EN60529, Type 4X, DTS-01
Impact Resistance	>7Nm
Material	2mm 316L Stainless Steel (EN 1.4404) enclosure with orbital finish, silicone gasket and captive 316 stainless steel fasteners, 3mm 316L (EN 1.4404) Stainless Steel gland plates
Ambient Temp Rating	-20 ^o C to +40 ^o C
Maximum Terminations	3 conductors per phase in & 3 conductors per phase out
No. of Gland Plates	Dependant upon configuration
Crimp lugs	16mm ² to 1000mm ²
Earthing	Via studs on enclosure, door and gland plates
Mounting	Via 3mm thick external mounting straps, slotted upper strap for ease of installation
Certification	
Area Classification	Zone 1 & 21, Gas and Dust / Class 1 Div 2
Type of Protection	Ex (Apparatus Certified), Ex tD (Dust Protected)
Apparatus Coding	Ex II 2 G, Ex tD A21 IP66 T70 ^o C
Certificate Number	Sira 08ATEX3017X

Dimensions



	X	X (M)	Y	Y (M)	X
ABJB73	650	700	950	750	300
ABJB74	650	700	950	750	300
ABJB83	800	850	1250	1050	300
ABJB84	800	850	1250	1050	300

Dimensions in mm

Options

ACH	Anti-condensation heater
EP	Electro-polished
PS	Epoxy powder coated, smooth finish (RAL colour may be specified)
PT	Epoxy powder coated, Hammer Grey
BPG	Single core terminal box mounted internally
CP	Internal access protection cover plate
MB	Mounting boss for eye bolts

Add the required suffix to the product reference.

Example: ABJB-74(2-2)PT = ABJB7 with 2 x conductors per phase top entry and 2 x conductor per phase bottom entry, Hammer paint finish.

Accessories

ABDM2010SS	M20 Breather drain
ABDM2510SS	M25 Breather drain
FSM12EB	M12 Eye bolts (stainless steel)
FSM16EDB3MM	M16 Eye bolts (stainless steel)