

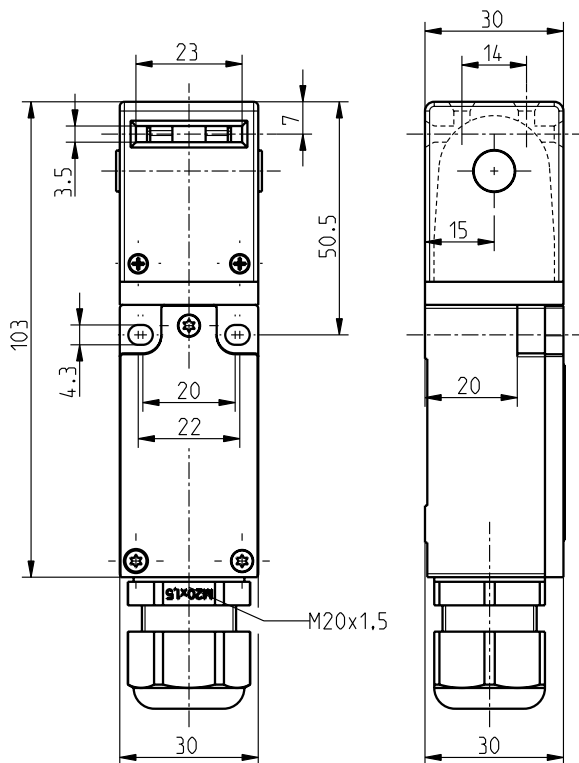
## Ex safety switches with separate actuator // Ex 95 AZ 10/1S Order no.: 95066301

### Features/Options

- Ex zone 1 and 21
- Thermoplastic enclosure, double insulated  $\square$
- Slow action  $\ominus$ , change-over contact with double break
- Wiring compartment

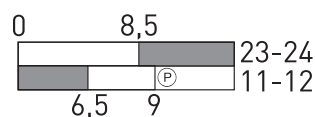
- Mounting details to EN 50 047
- Horizontal mounting slots
- N.B.: Please state required approvals for Russia and China with your order!

### Dimensions



### Switching diagram

Slow action  
1 NC/1 NO contact



### Technical data

<b>Standard</b>	EN 60947-5-1; EN 1088; EN 60079-0, EN 60079-1, EN 60079-31; EN ISO 13849-1
<b>Enclosure</b>	glass-fibre reinforced, shock-proof thermoplastic, self-extinguishing UL 94-V0
<b>Actuator</b>	stainless steel 1.4301
<b>Degree of protection</b>	IP 65 according to EN 60529
<b>Contact material</b>	silver
<b>Switching system</b>	slow action, positive break NC contact $\ominus$
<b>Switching elements</b>	change-over contact with double break Zb, galvanically separated contact bridges
<b>Connection</b>	M3 screw clamps
<b><math>B_{10d}</math> (10% Load)</b>	2 million
<b><math>T_M</math></b>	max. 20 years
<b>Cable length</b>	1 m
<b><math>U_{imp}</math></b>	4 kV
<b><math>U_i</math></b>	250 V
<b><math>I_{the}</math></b>	T6: 6 A; T5: 3 A
<b><math>I_e/U_e</math></b>	6 A/250 VAC; 4 A/24 VDC; 0.25 A/230 VDC
<b>Utilisation category</b>	AC-15, DC-13
<b>Max. fuse rating</b>	6 A gL/gG D-fuse
<b>Positive break travel</b>	8 mm
<b>Ambient temperature</b>	T6: -20 °C ... +65 °C, T5: -20 °C ... +95 °C
<b>Mechanical life</b>	> 1 million operations
<b>Ex marking</b>	$\text{Ex}$ II 2G Ex d IIC T6/T5 Gb, $\text{Ex}$ II 2D Ex tb IIIC T80°C/T95°C Db IECEx Ex d IIC T6/T5 Gb, Ex tb IIIC T80°C/T95°C Db
<b>Approvals</b>	PTB 03 ATEX 1070 X; IECEx PTB 06.0098X



Errors and omissions excepted.