

## LED X™ EXTERIOR LIGHTS



LXEXB1FW-AH



LXEX1F-AH

### Design Features

- Sealed and Waterproof
- Rust-Proof, Die-Cast Aluminum Housing
- Black Powder Coat or Brushed Aluminum Finish Housing
- Seven Flash Patterns: Cycle-Flash, Quad-Flash, Triple-Flash, Double-Flash, Fast Single, Single-Quad 70% (NFPA), Steady Burn
- Available in Amber, Red, Blue or White LEDs
- Available as an Option on 2100 and Excalibur® Lightbars
- No Color Until Illuminated
- Clear Lens Standard

### Specifications

- Available in Directional or Wide Optics
- Surface Mount
- Excellent Perimeter Light for Vehicles
- Weight: Single Head, 0.5 lb.
- Weight: Dual Heads, 1.0 lb.
- 12 Volt DC (24 Volt DC Available)
- 0.5 Amp per Module
- Rated 100,000 Hour Life
- SAE J845 Steady Burn
- 5 Year LED Warranty
- Wide – J845, Class II (Amber, Red, Blue) J1318 (Amber, Red, Blue)
- Directional – J595, Steady (Amber, Red) J845, Class I (Amber, Red, Blue) J1318 (Amber, Red, Blue)
- When Properly Configured, Meets California Title 13

### Standard Models

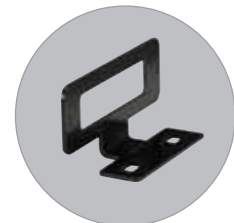
**Single Head: 5" L x 2" H x 1" D (127 mm x 50.8 mm x 25.4 mm)**

Aluminum Housing	Black Housing	LED Color	Optic
LXEX1F-AH	LXEXB1F-AH	Amber	Directional
LXEX1FW-AH	LXEXB1FW-AH	Amber	Wide
LXEX1F-BH	LXEXB1F-BH	Blue	Directional
LXEX1FW-BH	LXEXB1FW-BH	Blue	Wide
LXEX1F-RH	LXEXB1F-RH	Red	Directional
LXEX1FW-RH	LXEXB1FW-RH	Red	Wide
LXEX1F-WH	LXEXB1F-WH	White	Directional
LXEX1FW-WH	LXEXB1FW-WH	White	Wide

Model LXEX1F-AH with LXEXSHD Shroud & Mounting Bracket (sold separately)



Attach LXEX90 L-Bracket to Mount LED X Module



### Standard Models

**Single Head: Stop/Turn/Tail**

Aluminum Housing	Black Housing	Color
LXEX1STTR	LXEXB1STTR	Red

### Standard Models

**Single Head Accessories**

Model	Description
LXEXSHD	Backing Shroud for Deck or External Mounting
LXEX90	90° Bracket for Deck or External Mounting
LXEXLPBKT	Universal License Plate
SNPLBKT	Universal Snow Plow Bracket for XT3, Xt4, OPX3, LEDX and T-Rex

**LED X™ EXTERIOR LIGHTS**



Top and bottom heads can be operated independently

Standard Models			
Dual Head, Stacked: 5" L x 3.25" H x 1" D (127 mm x 82.55 mm x 25.4 mm)			
Aluminum Housing	Black Housing	LED Color	Optic
LXEX2F-AAH	LXEXB2F-AAH	Amber, Amber	Directional
LXEX2FW-AAH	LXEXB2FW-AAH	Amber, Amber	Wide
LXEX2F-ABH	LXEXB2F-ABH	Amber, Blue	Directional
LXEX2FW-ABH	LXEXB2FW-ABH	Amber, Blue	Wide
LXEX2F-ARH	LXEXB2F-ARH	Amber, Red	Directional
LXEX2FW-ARH	LXEXB2FW-ARH	Amber, Red	Wide
LXEX2F-AWH	LXEXB2F-AWH	Amber, White	Directional
LXEX2FW-AWH	LXEXB2FW-AWH	Amber, White	Wide
LXEX2F-RRH	LXEXB2F-RRH	Red, Red	Directional
LXEX2FW-RRH	LXEXB2FW-RRH	Red, Red	Wide
LXEX2F-RWH	LXEXB2F-RWH	Red, White	Directional
LXEX2FW-RWH	LXEXB2FW-RWH	Red, White	Wide
LXEX2F-WWH	LXEXB2F-WWH	White, White	Directional
LXEX2FW-WWH	LXEXB2FW-WWH	White, White	Wide

Standard Models		
Dual Head: Stop/Turn/Tail		
Aluminum Housing	Black Housing	LED Color
LXEX2STTRR	LXEXB2STTRR	Red, Red

# LED X™ EXTERIOR LIGHTS

LXTABF-AAH



Side-by-side heads can be operated independently

## Standard Models

**Dual Head, Side-By-Side: 9" L x 2" H x 1" D (228.6 mm x 50.8 mm x 25.4 mm)**

Aluminum Housing	Black Housing	LED Color	Optic
LXTAF-AAH	LXTABF-AAH	Amber, Amber	Directional
LXTAFW-AAH	LXTABFW-AAH	Amber, Amber	Wide
LXTAF-ABH	LXTABF-ABH	Amber, Blue	Directional
LXTAFW-ABH	LXTABFW-ABH	Amber, Blue	Wide
LXTAF-ARH	LXTABF-ARH	Amber, Red	Directional
LXTAFW-ARH	LXTABFW-ARH	Amber, Red	Wide
LXTAF-AWH	LXTABF-AWH	Amber, White	Directional
LXTAFW-AWH	LXTABFW-AWH	Amber, White	Wide
LXTAF-RRH	LXTABF-RRH	Red, Red	Directional
LXTAFW-RRH	LXTABFW-RRH	Red, Red	Wide
LXTAF-RWH	LXTABF-RWH	Red, White	Directional
LXTAFW-RWH	LXTABFW-RWH	Red, White	Wide
LXTAF-WWH	LXTABF-WWH	White, White	Directional
LXTAFW-WWH	LXTABFW-WWH	White, White	Wide

## Standard Models

### Accessories

Model	Description
LXTARDMT	Bumper/Rear Deck Mount
LXTANSMT	NarrowStik™ Mount



LXEX1FAH