



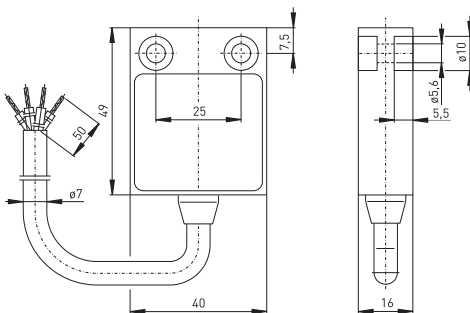
Ex position switches with safety function // Ex 13

Features/Options


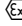
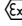

- Ex zone 1 and 2, as well as 21 and 22
- Thermoplastic enclosure
- Double insulation 
- Slow action , change-over contact with double break
- Slow action available with contact overlapping

- Suitable for in-line mounting
- With pre-wired cable, cable length 1 metre
- Special version only for equipment category 3D, available for dust Ex zone 22
- Inmetro approval for Brazil to be ordered separately

Dimensions



Technical data

Standards	IEC/EN 60947-5-1; EN 1088; EN 50014; EN 50018; EN 50281-1-1
Enclosure	glass-fibre reinforced, shock-proof thermoplastic, self-extinguishing UL 94-V0
Switch insert	-
Protection class	IP 65 according to EN 60529
Contact material	silver
Switching system	slow action, positive break NC contact 
Switching system	change-over contact with double break Zb, galvanically separated contact bridges
Connection	cable H05VV-F
B _{10d} (10% Load)	2 million
T _M	10 years
Cable section	4 x 0.75 mm ²
Cable length	1, 2, 5 and 10 m
U _{imp}	4 kV
U _i	250 V
I _{the}	6 A
I _e /U _e	6 A/250 VAC; 0.25 A/230 VDC
Utilisation category	AC-15, DC-13
Max. fuse rating	6 A gL/gG D-fuse
Ambient temperature	-20 °C ... +65 °C
Mechanical life	> 1 million operations
Switching frequency	1800/h
Repeat accuracy of switching points	±0.1 mm
Impact resistance/ Contact opening	max. 2 x 4.5 mm
Ex-marking	 II 2G Ex d IIC T6/T5 Gb,  II 2D Ex tb IIIC T80°C/ T95°C Db IP65
Approvals	PTB 03 ATEX 1068 X 

Errors and omissions excepted.