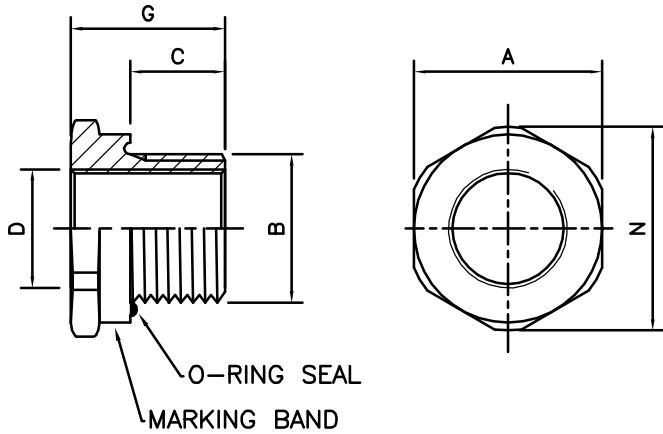


DRG. No.
PCG/COM/RED MM

DO NOT SCALE OFF DRAWING "IF IN DOUBT ASK".
REPORT ALL ERRORS AND ALTERATIONS.

THIRD ANGLE PROJECTION



| REDUCER SIZE | A A/F | B THD | C DIM | D THD | G DIM | N DIA |
|--------------|----------|----------|----------|----------|----------|----------|
| M20-M16 | 27.0 | M20x1.5 | 16.0 | M16x1.5 | 26.0 | 29.7 |
| M25-M16 | 31.8 | M25x1.5 | 16.0 | M16x1.5 | 26.0 | 35.0 |
| M25-M20 | 31.8 | M25x1.5 | 16.0 | M20x1.5 | 26.0 | 35.0 |
| M32-M16 | 37.6 | M32x1.5 | 16.0 | M16x1.5 | 26.0 | 41.4 |
| M32-M20 | 37.6 | M32x1.5 | 16.0 | M20x1.5 | 26.0 | 41.4 |
| M32-M25 | 37.6 | M32x1.5 | 16.0 | M25x1.5 | 26.0 | 41.4 |
| M40-M16 | 47.2 | M40x1.5 | 16.0 | M16x1.5 | 26.0 | 51.9 |
| M40-M20 | 47.2 | M40x1.5 | 16.0 | M20x1.5 | 26.0 | 51.9 |
| M40-M25 | 47.2 | M40x1.5 | 16.0 | M25x1.5 | 26.0 | 51.9 |
| M40-M32 | 47.2 | M40x1.5 | 16.0 | M32x1.5 | 26.0 | 51.9 |
| M50-M16 | 57.2 | M50x1.5 | 16.0 | M16x1.5 | 27.0 | 62.9 |
| M50-M20 | 57.2 | M50x1.5 | 16.0 | M20x1.5 | 27.0 | 62.9 |
| M50-M25 | 57.2 | M50x1.5 | 16.0 | M25x1.5 | 27.0 | 62.9 |
| M50-M32 | 57.2 | M50x1.5 | 16.0 | M32x1.5 | 27.0 | 62.9 |
| M50-M40 | 57.2 | M50x1.5 | 16.0 | M40x1.5 | 27.0 | 62.9 |
| M63-M16 | 69.9 | M63x1.5 | 16.0 | M16x1.5 | 27.0 | 76.8 |
| M63-M20 | 69.9 | M63x1.5 | 16.0 | M20x1.5 | 27.0 | 76.8 |
| M63-M25 | 69.9 | M63x1.5 | 16.0 | M25x1.5 | 27.0 | 76.8 |
| M63-M32 | 69.9 | M63x1.5 | 16.0 | M32x1.5 | 27.0 | 76.8 |
| M63-M40 | 69.9 | M63x1.5 | 16.0 | M40x1.5 | 27.0 | 76.8 |
| M63-M50 | 69.9 | M63x1.5 | 16.0 | M50x1.5 | 27.0 | 76.8 |
| M75-M16 | 90.2 | M75x1.5 | 16.0 | M16x1.5 | 27.0 | 99.2 |
| M75-M20 | 90.2 | M75x1.5 | 16.0 | M20x1.5 | 27.0 | 99.2 |
| M75-M25 | 90.2 | M75x1.5 | 16.0 | M25x1.5 | 27.0 | 99.2 |
| M75-M32 | 90.2 | M75x1.5 | 16.0 | M32x1.5 | 27.0 | 99.2 |
| M75-M40 | 90.2 | M75x1.5 | 16.0 | M40x1.5 | 27.0 | 99.2 |
| M75-M50 | 90.2 | M75x1.5 | 16.0 | M50x1.5 | 27.0 | 99.2 |
| M75-M63 | 90.2 | M75x1.5 | 16.0 | M63x1.5 | 27.0 | 99.2 |
| M80-M16 | 90.2 | M80x2.0 | 20.0 | M16x1.5 | 31.0 | 99.2 |
| M80-M20 | 90.2 | M80x2.0 | 20.0 | M20x1.5 | 31.0 | 99.2 |
| M80-M25 | 90.2 | M80x2.0 | 20.0 | M25x1.5 | 31.0 | 99.2 |
| M80-M32 | 90.2 | M80x2.0 | 20.0 | M32x1.5 | 31.0 | 99.2 |
| M80-M40 | 90.2 | M80x2.0 | 20.0 | M40x1.5 | 31.0 | 99.2 |
| M80-M50 | 90.2 | M80x2.0 | 20.0 | M50x1.5 | 31.0 | 99.2 |
| M80-M63 | 90.2 | M80x2.0 | 20.0 | M63x1.5 | 31.0 | 99.2 |

PRODUCT PART NUMBERING

AR-x-x-F-xx-Size-Size

- AR - Product Type
- x - Certification/Concept
- x - Plating Option
- F - Female Thread Size
- xx - Male Thread Size
- Size - B Brass Material
- Size - S Stainless Steel Material
- Size - A Aluminium Material

1 Nitrile O-Ring IP Seal
3 Silicone O-Ring IP Seal

FOR FULL PART NUMBERING AND HAZARDOUS AREA CERTIFICATION DETAILS PLEASE REFER TO THE APPROPRIATE PRODUCT LITERATURE AND CERTIFICATES.

| REDUCER SIZE | A A/F | B THD | C DIM | D THD | G DIM | N DIA |
|--------------|----------|----------|----------|----------|----------|----------|
| M85-M16 | 106.4 | M85x2.0 | 20.0 | M16x1.5 | 31.0 | 117.0 |
| M85-M20 | 106.4 | M85x2.0 | 20.0 | M20x1.5 | 31.0 | 117.0 |
| M85-M25 | 106.4 | M85x2.0 | 20.0 | M25x1.5 | 31.0 | 117.0 |
| M85-M32 | 106.4 | M85x2.0 | 20.0 | M32x1.5 | 31.0 | 117.0 |
| M85-M40 | 106.4 | M85x2.0 | 20.0 | M40x1.5 | 31.0 | 117.0 |
| M85-M50 | 106.4 | M85x2.0 | 20.0 | M50x1.5 | 31.0 | 117.0 |
| M85-M63 | 106.4 | M85x2.0 | 20.0 | M63x1.5 | 31.0 | 117.0 |
| M85-M75 | 106.4 | M85x2.0 | 20.0 | M75x1.5 | 31.0 | 117.0 |
| M90-M16 | 106.4 | M90x2.0 | 20.0 | M16x1.5 | 31.0 | 117.0 |
| M90-M20 | 106.4 | M90x2.0 | 20.0 | M20x1.5 | 31.0 | 117.0 |
| M90-M25 | 106.4 | M90x2.0 | 20.0 | M25x1.5 | 31.0 | 117.0 |
| M90-M32 | 106.4 | M90x2.0 | 20.0 | M32x1.5 | 31.0 | 117.0 |
| M90-M40 | 106.4 | M90x2.0 | 20.0 | M40x1.5 | 31.0 | 117.0 |
| M90-M50 | 106.4 | M90x2.0 | 20.0 | M50x1.5 | 31.0 | 117.0 |
| M90-M63 | 106.4 | M90x2.0 | 20.0 | M63x1.5 | 31.0 | 117.0 |
| M90-M75 | 106.4 | M90x2.0 | 20.0 | M75x1.5 | 31.0 | 117.0 |
| M90-M80 | 106.4 | M90x2.0 | 20.0 | M80x2.0 | 31.0 | 117.0 |
| M100-M16 | 114.3 | M100x2.0 | 20.0 | M16x1.5 | 31.0 | 125.7 |
| M100-M20 | 114.3 | M100x2.0 | 20.0 | M20x1.5 | 31.0 | 125.7 |
| M100-M25 | 114.3 | M100x2.0 | 20.0 | M25x1.5 | 31.0 | 125.7 |
| M100-M32 | 114.3 | M100x2.0 | 20.0 | M32x1.5 | 31.0 | 125.7 |
| M100-M40 | 114.3 | M100x2.0 | 20.0 | M40x1.5 | 31.0 | 125.7 |
| M100-M50 | 114.3 | M100x2.0 | 20.0 | M50x1.5 | 31.0 | 125.7 |
| M100-M63 | 114.3 | M100x2.0 | 20.0 | M63x1.5 | 31.0 | 125.7 |
| M100-M75 | 114.3 | M100x2.0 | 20.0 | M75x1.5 | 31.0 | 125.7 |
| M100-M80 | 114.3 | M100x2.0 | 20.0 | M80x2.0 | 31.0 | 125.7 |
| M100-M85 | 114.3 | M100x2.0 | 20.0 | M85x2.0 | 31.0 | 125.7 |
| M100-M90 | 114.3 | M100x2.0 | 20.0 | M90x2.0 | 31.0 | 125.7 |

NOTES

- MATERIAL OPTIONS: -
BRASS CZ121 - CW614N CuZn 39Pb3
STAINLESS STEEL 316L - 1.4404
ALUMINIUM - AW6082
- PLATING OPTIONS: -
ELECTRO NICKEL
ELECTROLESS NICKEL
ELECTRO ZINC
- THREADS CONFORM AS FOLLOWS: -
ISO M: ISO 965-1 1998, IEC 60423 1993
- THREAD GAUGING AS FOLLOWS: -
ISO M: 6g FIT (MALE), 6H (FEMALE)
- STANDARD PITCHES SIZES ARE AS FOLLOWS: -
UP TO M75 - 1.5MM
ABOVE M75 - 2.0MM
- STAINLESS STEEL ADAPTORS HAVE NO MARKING BAND. MARKING IS ELECTRO ETCHED ON FLAT HEXAGON FACE.
- DIMENSIONS A AND N MAY BE SUBJECT TO CHANGE DUE TO MATERIAL AVAILABILITY.

DRAWN RJW
DATE 07/11/2011
CHECKED
APPROVED
CAD REF
SCALE N.T.S
ISSUE
1. Original

X-REFS:-

ALL DIMENSIONS ARE IN MILLIMETERS, U.O.S.
MACHINING TOLERANCES ARE APPLICABLE.
ALL BURRS AND SHARP EDGES REMOVED.

PEPPERS CABLE GLANDS LIMITED
STANHOPE ROAD, CAMBERLEY, SURREY, UK.
TEL +44 (0)1276 64232, FAX +44 (0)1276 691752

TITLE AR RANGE
REDUCER - METRIC TO METRIC

The design and manufacturing information contained in this drawing is the exclusive right of PEPPERS CABLE GLANDS LTD and must not be copied or used for manufacturing purposes without express authority in writing from the said company.

DRG. No.
PCG/COM/RED MM
ISSUE 1

THIS DRAWING IS OF A CERTIFIED COMPONENT, AND NO CHANGES MUST BE MADE WITHOUT REFERENCE TO THE CERTIFYING AUTHORITY.