

SPECTRA B300STR

Xenon Strobe Flashing Beacon

5J (Ws) @1.0 Hz

IP Rating: IP65

Temp: -25°C to +50°C

Unit weight: 325g DC : 300g AC

CE

Dimensions : Ø100 x 150mm

1.5mm² terminals

Cable entry: 1 x 5-7mm push through
grommet

1 x M20 cable entry (IP65)

Order code Voltage

B300STR012B/x 12V AC/DC 600mA

B300STR024B/x 24V AC/DC 300mA

B300STR048B/x 48V AC/DC 250mA

B300STR115B/x 115V AC 70mA

B300STR230B/x 230V AC 35mA

X = Lens colour

R = Red

B = Blue

G = Green

A = Amber

C = Clear

Y = Yellow

Mountings

B300RAB001 Right angle bracket

B300TMA001 Tube mounting assembly

Tel : +44 (0)20 8743 8880 Fax : +44(0)20 8740 4200

email : sales@e2s.com web : www.e2s.com



ATTENTION: Installation must be carried out by an electrician in compliance with the latest codes and regulations.



ATTENTION: Disconnect from power source before installation or service to prevent electric shock.



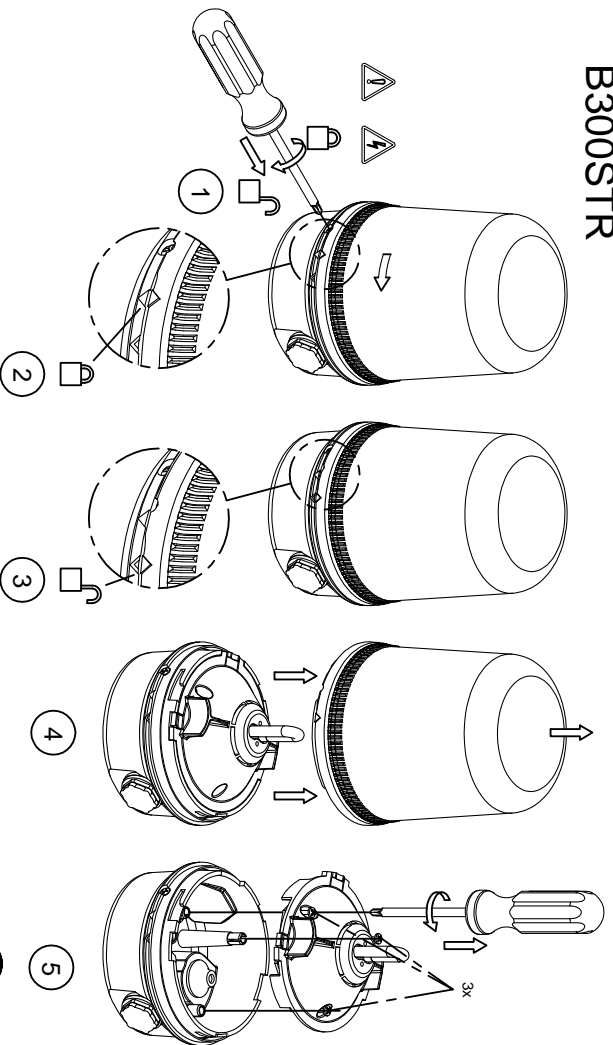
ATTENTION: On strobe beacons allow a minimum of 2 minutes for hazardous high voltage to discharge from unit.



ATTENTION: Lens on unit will be hot allow to cool prior to removal.



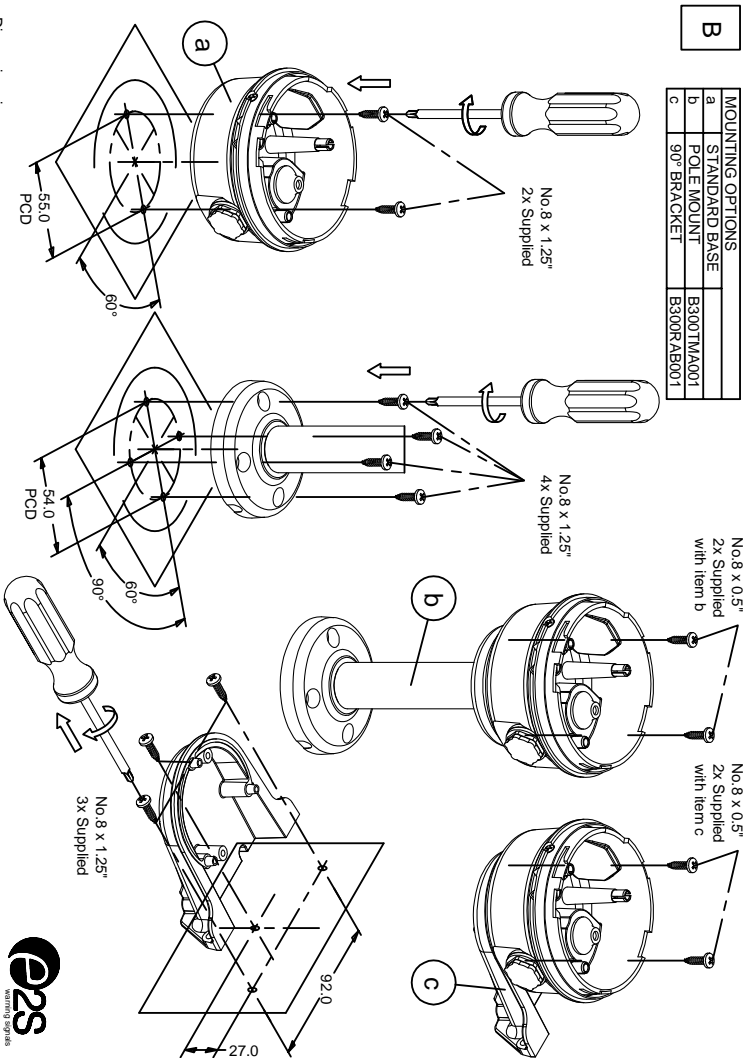
A SPECIIRA B300STR



Tel : +44 (0)20 8743 8880 Fax : +44 (0)20 8740 4200
 mail : sales@e2s.com web : www.e2s.com



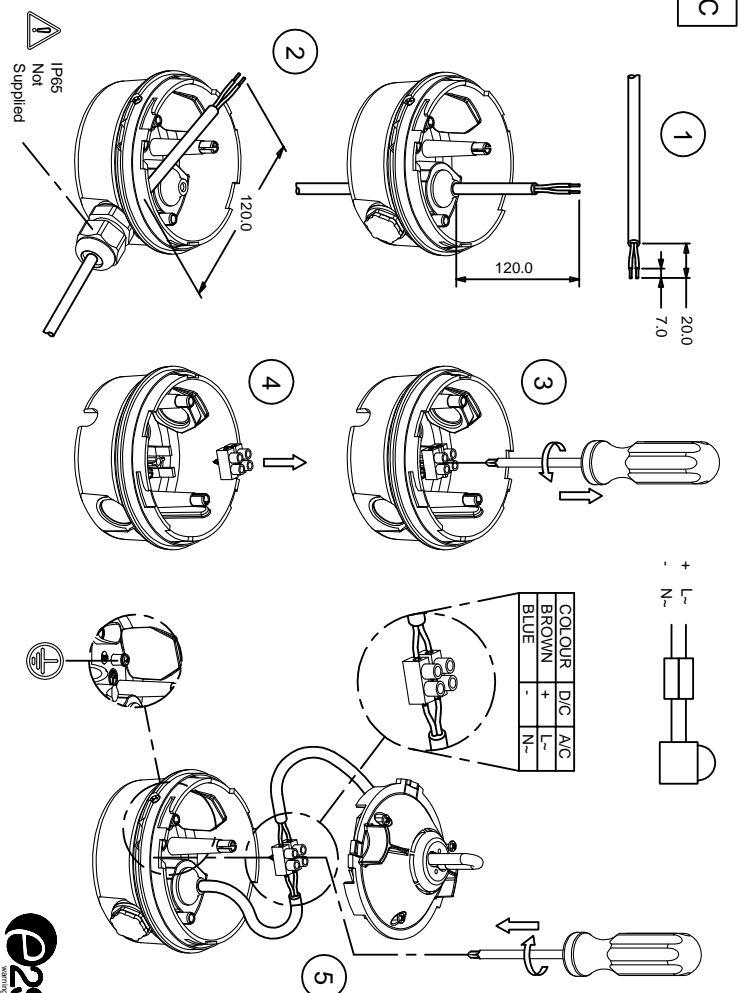
MOUNTING OPTIONS	
a	STANDARD BASE
b	POLE MOUNT
c	90° BRACKET



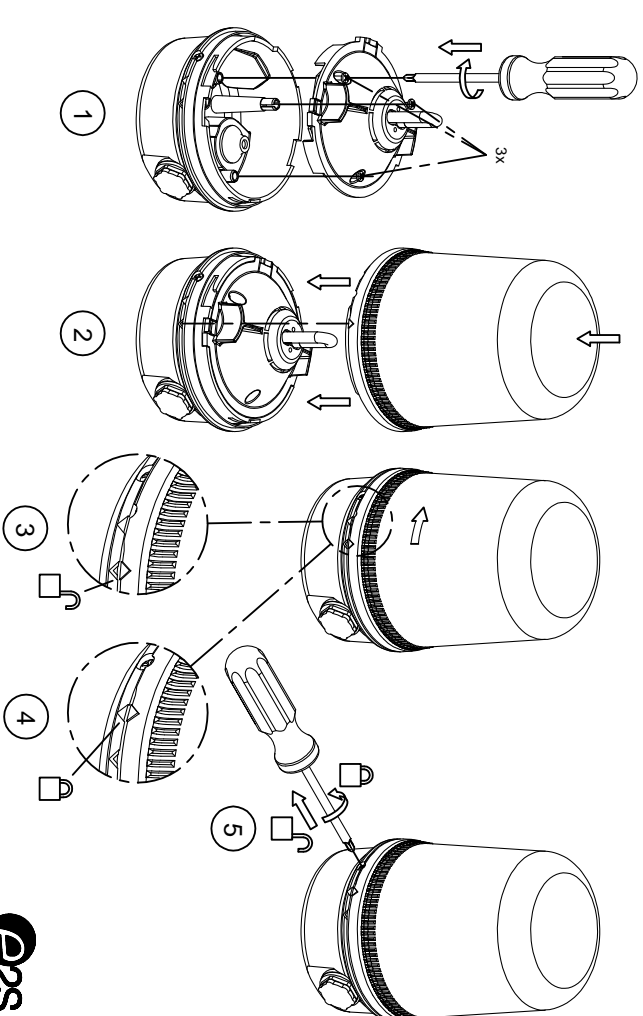
Dimensions in mm



C



D



DN1200-0011-IS_SHTZ_ISSUE_B

