

1

SPECTRA B400STR

Xenon Strobe Flashing Beacon

15J @ 1Hz

IP Rating: IP65

Temp: -25°C to +50°C

Unit weight: 696g DC 632g AC

CE

Dimensions : Ø140 x 225mm

1.5mm² terminals

Cable entry: 1 x 5-7mm push through grommet

2 x M20 cable entry (IP65)

Order code Voltage

B400STR024B/x 24V DC/AC 870mA

B400STR048B/x 48V DC/AC 480mA

x = Lens colour

R = Red

B = Blue

G = Green

A = Amber

C = Clear

Y = Yellow

B400STR115B/x 115V AC 400mA

B400STR230B/x 230V AC 225mA

Mountings

B400RAB001 Right angle bracket

B400TMA001 Tube mounting assembly

Tel : +44(0)20 8743 8880 Fax : +44(0)20 8740 4200
mail : sales@e2s.com web : www.e2s.com

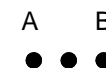


3

B400STR



Dual Flash 15J + 10J @ 0.75Hz



Single Flash 15J @ 1Hz



Triple Flash 15J + 10J + 10J @ 0.5Hz



2



ATTENTION: Installation must be carried out by an electrician in compliance with the latest codes and regulations.



ATTENTION: Disconnect from power source before installation or service to prevent electric shock.



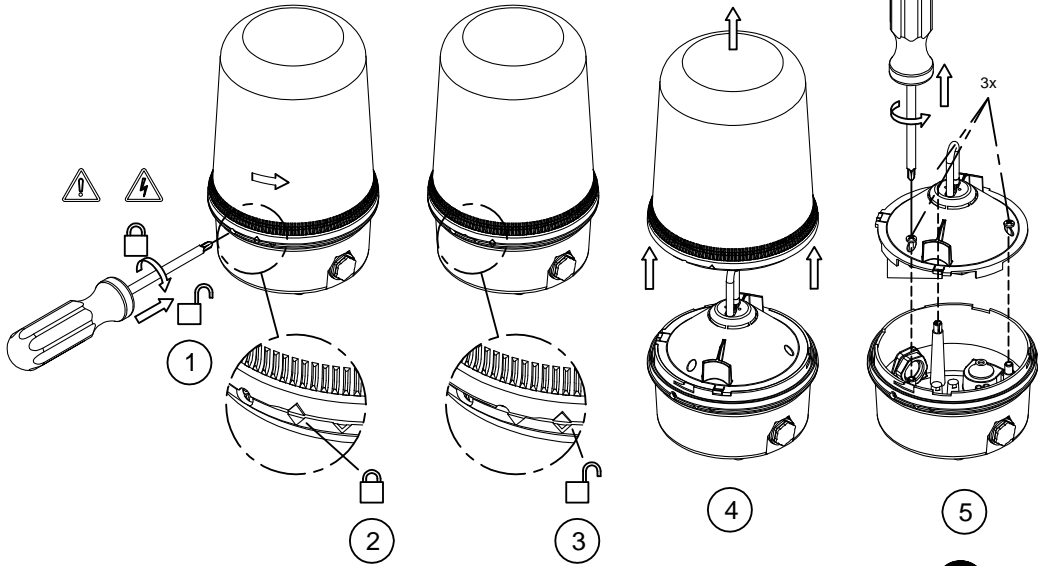
ATTENTION: On strobe beacons allow a minimum of 2 minutes for hazardous high voltage to discharge from unit.



ATTENTION: Lens on unit will be hot allow to cool prior to removal.



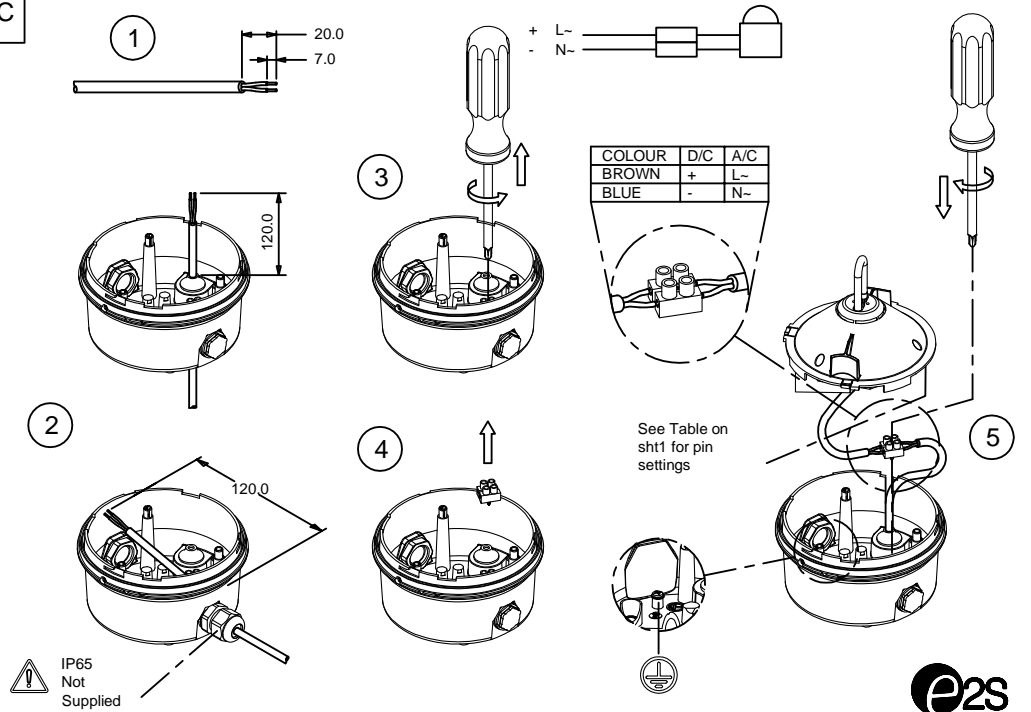
A SPECTRA B400STR



Tel: +44(0)20 8743 8880 Fax: +44(0)2 8740 4200
mail: sales@e2s.com web: www.e2s.com

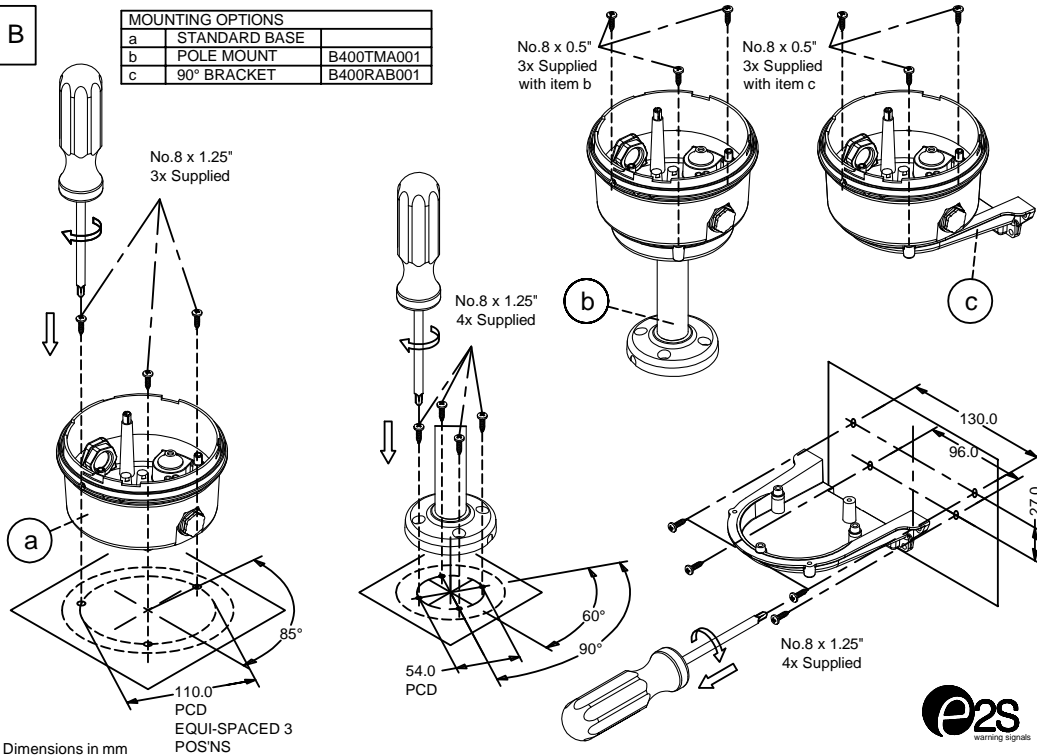


C



B

MOUNTING OPTIONS		
a	STANDARD BASE	
b	POLE MOUNT	B400TMA001
c	90° BRACKET	B400RAB001



D

