

DRG. No.
PCG/ATX/UF

DO NOT SCALE OFF DRAWING "IF IN DOUBT ASK".
REPORT ALL ERRORS AND ALTERATIONS.

THIRD ANGLE PROJECTION

MARKING

1. EXAMPLES OF MARKING ON BAND:-
PEPPERS GU15 3BT UK Ex II 1D II 2G
A8BF 20S M20 SIRA01ATEX1270X
Exd IIC Gb / Exe IIC Gb / Ex ta IIIC Da
IECEx SIR 05.0020X IP66 IP68

2. SPECIAL MARKS:-

Ex II 3GD Ex nR II Gc
SIRA 09ATEX1221X

Marking and other information may be present on the gland or packaging in accordance with document PCG/ATX/PEXMP.

DRAWN ASC

DATE 27/04/09

CHECKED

APPROVED

CAD REF PCGATXUF

SCALE N.T.S

ISSUE

1. Original

2. Markings revised; cap 6M replaced by 12M.

3. Marking updated to comply with latest 60079 Series & to include ExTD marking.

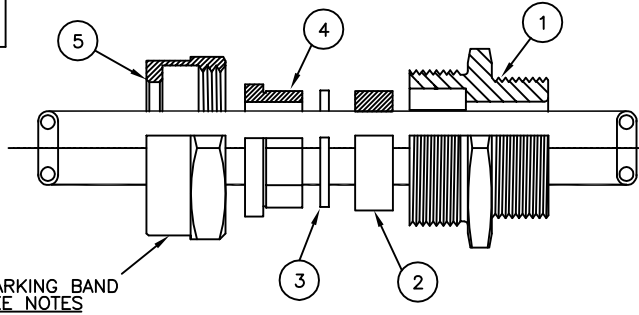
4. Updated to include Ex nR II marking.

5. Updates to marking. Full parts list added. Clarification of notes and Connector options added.

X-REFS:-

CSFLOX
TABFLOX
ISSFLOX
CSFLATAB
CAO

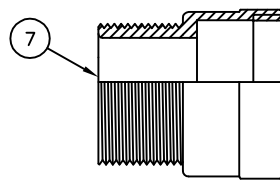
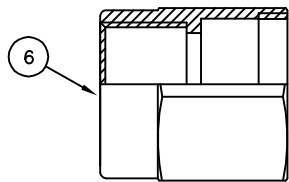
GLANDS OF BASIC TYPE A



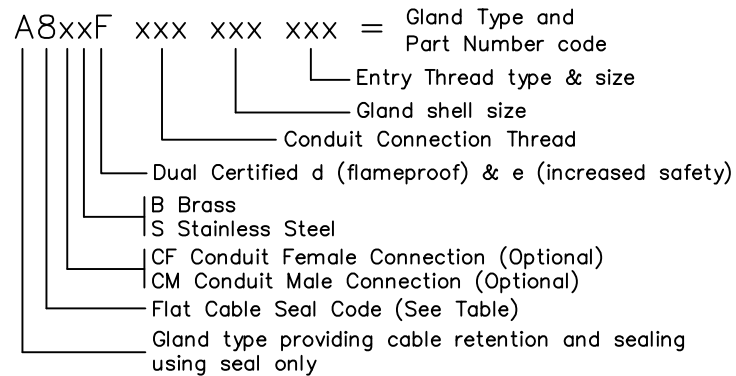
MARKING BAND
SEE NOTES

A8CF*F

A8CM*F



GLAND TYPE NUMBERING



PARTS LIST & CERTIFICATE CROSS-REFERENCE

Balloon Ref	Part Description	Drawing Number	Alternate Drawing Number	Other Certificate Nos. used on
1	ENTRY BODY	PCG/ATX/1M	PCG/ATX/1MT	SIRA 01ATEX1271X
2	INNER SEAL	PCG/ATX/72M	---	---
3 (e)	SKID WASHER	PCG/ATX/11MR	---	---
4	COMPRESSION NUT	PCG/ATX/8M	---	---
5	OUTER CAP	PCG/ATX/12M	---	---
6	CAP - MALE CONNECTOR	PCG/ATX/12MF	---	---
7	CAP - FEMALE CONNETOR	PCG/ATX/12MM	---	---

SEAL CODES, PART NOS., MATERIALS & TEMPERATURES

CODE	INNER	OUTER	TEMPERATURE RANGE
8	72MIS (a)	-	-60°C to +180°C Operating

METAL PARTS MATERIAL CODES

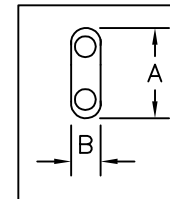
CODE	MATERIAL
B	BRASS
S	STAINLESS STEEL

NOTES

- a Silicone seals are coloured white (parts 72MIS).
- b These glands are primarily intended for use with unarmoured cable, but they may be used with other types, provided the installation meets the requirements of BS EN 60079 Part 14.
- c On size 20, cable dim A may exceed the values shown in the table by 0.5 mm, provided dim B is not less than 6.0 mm.
- d Size 20R and 20s glands use same components as size 20, except that seals are 72MIS/20R and 72MIS/20s respectively.
- e Inner skid washer (part 11MR) is only used on Size 20R.
- f Stainless Steel glands may have marking electrochemically etched.
- g Paint or Plating may be applied to any or all main gland body components. Maximum thickness of plating is 0.008mm. No paint shall be applied to entry thread joints.
- h A8CFxF gland use part 12MF in place of 12M part.
A8CMxM gland use part 12MM in place of 12M part.

CABLE DIMENSIONS

GLAND SIZE	OUTER DIMENSIONS			
	MIN		MAX	
	A	B	A	B
20S	6.3	4.0	11.7	7.0
20	10.3	5.6	13.5	9.0
20R	8.1	5.8	13.5	6.2



PEPPERS CABLE GLANDS LIMITED

STANHOPE ROAD, CAMBERLEY, SURREY, UK.
TEL +44 (0)1276 64232, FAX +44 (0)1276 691752

TITLE ATEX INSTRUMENT RANGE
FLAT CABLE (HEAT TRACE) UNARMoured
TYPE A8**F SERIES

The design and manufacturing information contained in this drawing is the exclusive right of PEPPERS CABLE GLANDS LTD and must not be copied or used for manufacturing purposes without express authority in writing from the said company.

DRG. No.

PCG/ATX/UF

ISSUE 5

THIS DRAWING IS OF A CERTIFIED COMPONENT, AND NO CHANGES MUST BE MADE WITHOUT REFERENCE TO THE CERTIFYING AUTHORITY.