

DRG. No.
PCG/ATX/BF

DO NOT SCALE OFF DRAWING "IF IN DOUBT ASK".
REPORT ALL ERRORS AND ALTERATIONS.

THIRD ANGLE PROJECTION

MARKING

1. EXAMPLES OF MARKING ON BAND:-

Peppers GU15 3BT UK E8XBF 20 M20
IECEX SIR 05.0020X Sira 01ATEX1270X Sira 09ATEX1221X
Exd IIC Gb Exe IIC Gb Exta IIC Da ExnR IIC Gc
Ⓢ II 1D 2G 3G IP66 IP68
or
Peppers GU15 3BT UK E8XBF 20 M20
IECEX SIR 05.0020X Sira 01ATEX1270X
Exe IIC Gb Ⓢ II 2G IP66 IP68

2. SPECIAL MARKS:-
Marking and other information may be present on the gland or packaging in accordance with document PCG/ATX/PEXMP.

DRAWN ASC

DATE 27/04/09

CHECKED

APPROVED

CAD REF PCGATXBF

SCALE N.T.S

ISSUE

1. Original

2. Various changes for copper braided cable; revised markings

3. Marking updated to comply with latest 60079 Series & to include ExtD marking.

4. 23/07/09 Updated to include Ex nR II marking.

5. 23/08/12

Full parts list added and notes clarified. Marking updated & now 2 sheet drawing

6. 06/03/14

E8XC*** option added. DBXC option clarified. Type numbering table & Note d amended. Note j, k & L added. E type 20R inner seal range corrected. 4MR part removed. 6MF, 6MM, 4MF & 4MM parts added.

X-REFS:-

CSFLB3X
TABFLBX
ISSFLBX
CSFLATAB
CAO



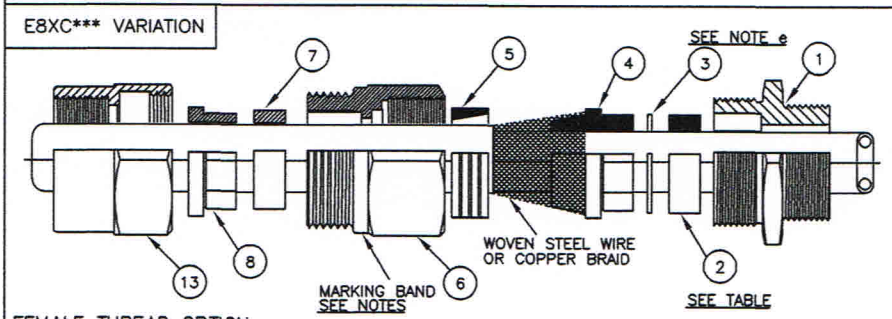
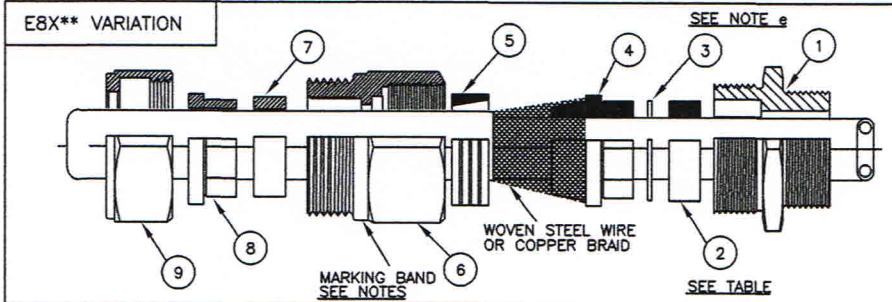
PEPPERS CABLE GLANDS LIMITED

STANHOPE ROAD, CAMBERLEY, SURREY, UK.
TEL +44 (0)1276 64232, FAX +44 (0)1276 691752

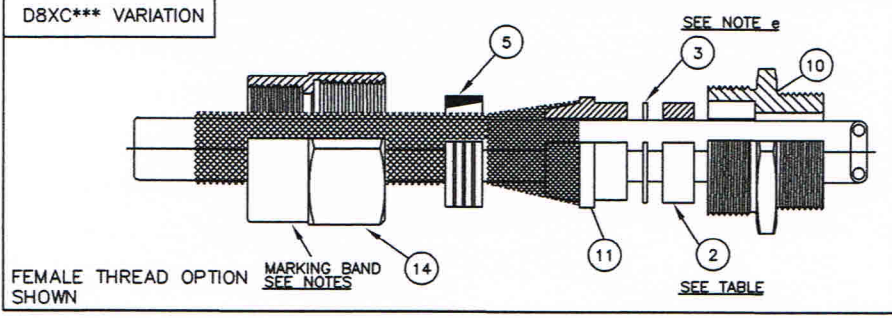
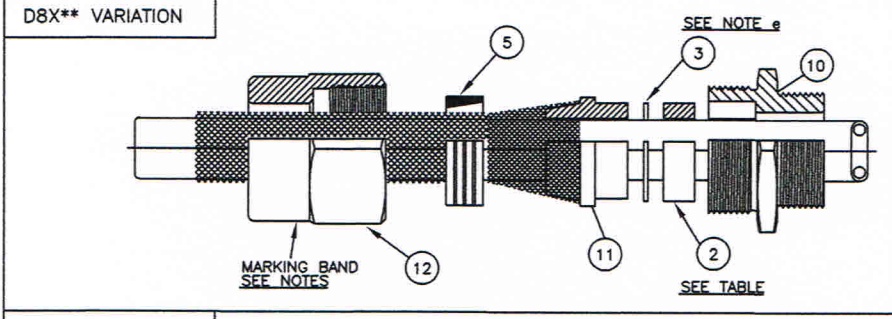
TITLE ATEX INSTRUMENT RANGE
FLAT CABLE (HEAT TRACE). TYPES E8X**,
E8XC***, D8XC*** & D8X**
Sheet 1 of 2

The design and manufacturing information contained in this drawing is the exclusive right of PEPPERS CABLE GLANDS LTD and must not be copied or used for manufacturing purposes without express authority in writing from the said company.

DRG. No.
PCG/ATX/BF
ISSUE 6



FEMALE THREAD OPTION SHOWN



FEMALE THREAD OPTION SHOWN

PARTS LIST & CERTIFICATE CROSS-REFERENCE

Balloon Ref	Part Description	Drawing Number	Other Certificate Nos. used on
1	ENTRY BODY	PCG/ATX/61M	---
2	INNER SEAL	PCG/ATX/72M	---
3	SKID WASHER	PCG/ATX/11MR	---
4	CONE	PCG/ATX/63M	---
5	CLAMP RING	PCG/ATX/10M	SIRA 01ATEX1271X
6	MIDDLE CAP	PCG/ATX/75M	---
7	OUTER SEAL	PCG/ATX/72M	---
8	OUTER BUSH	PCG/ATX/74M	---
9	OUTER CAP	PCG/ATX/6M	BAS 01ATEX2271X
10	ENTRY BODY	PCG/ATX/1M	SIRA 01ATEX1271X
11	CONE	PCG/ATX/3MD	---
12	OUTER CAP	PCG/ATX/4M	SIRA 01ATEX1271X
13	CONDUIT CAP FEMALE	PCG/ATX/6MF	---
13	CONDUIT CAP MALE	PCG/ATX/6MM	---
14	CONDUIT CAP FEMALE	PCG/ATX/4MF	---
14	CONDUIT CAP MALE	PCG/ATX/4MM	---

THIS DRAWING IS OF A CERTIFIED COMPONENT, AND NO CHANGES MUST BE MADE WITHOUT REFERENCE TO THE CERTIFYING AUTHORITY.

SEAL CODES, PART NOS., MATERIALS & TEMPERATURES			
CODE	INNER	OUTER	TEMPERATURE RANGE (a)
8	72MIS (a)	72MOS (a)	-60°C to +180°C Operating

METAL PARTS MATERIAL CODES	
CODE	MATERIAL
B	BRASS
S	STAINLESS STEEL

- NOTES
- a Silicone seals are coloured white.
 - b For code E glands, the outer seal may act as a cable steady if the cable has no outer sheath.
Code D glands may be used with cable having an outer sheath.
 - c On size 20, cable dimension A may exceed the values shown in the table by 0.5 mm, provided dimension B is not less than 6.0mm.
 - d Size 20R and 20s glands use same components as size 20, except that seals are 72MIS/20R and 72MIS/20s respectively.
 - e Inner skid washer (part 11MR) is only used on Size 20R.
 - f Stainless Steel glands may have marking electrochemically etched.
 - g Plating or paint may be applied to any or all main gland body components. Maximum thickness of plating is 0.008mm. No paint shall be applied to entry thread joints.
 - h Non-standard threads shown on PCG/ETDMV may be used on entry bodies, parts 1M and 61M.
 - i When clamping copper braid, the cable must be securely anchored next to the entry to prevent pulling and twisting.
 - j E8XC*** glands utilize 6MF or 6MM component and are used to provide a connection for threaded rigid/solid or flexible conduit.
 - k D8XC*** glands utilize 4MF or 4MM component and are used to provide a connection for threaded rigid/solid or flexible conduit.
 - l Glands may be supplied with less than 8 full threads on entry thread but with a minimum length of 8.0mm and given certification code E to designate Increased Safety approval only. For example: E8XBE.

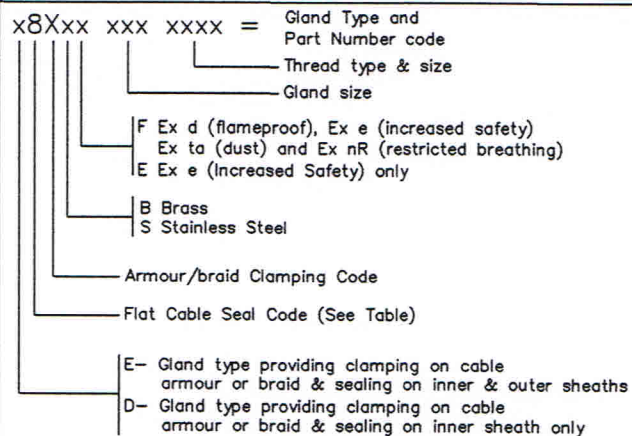
DIMENSIONS FOR E TYPE GLANDS

GLAND SIZE	ARMOUR WIRE DIAMETER		INNER SEALING RANGE				OUTER SEALING RANGE			
			MIN		MAX		MIN		MAX	
	MIN	MAX	A	B	A	B	A	B	A	B
20S	0.1	0.3	6.3	4.0	11.7	7.0	7.9	4.5	11.7	7.0
20	0.1	0.3	10.3	5.6	13.5	9.0	11.0	4.5	13.5	9.0
20R	0.1	0.3	8.1	5.8	13.5	6.2	10.7	5.4	16.1	8.3

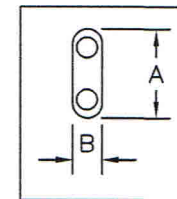
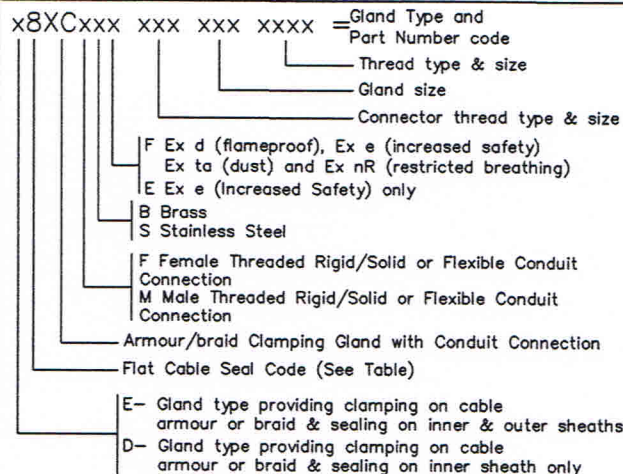
DIMENSIONS FOR D TYPE GLANDS

GLAND SIZE	ARMOUR WIRE DIAMETER		INNER SEALING RANGE				OUTER CABLE SIZE			
			MIN		MAX		MIN		MAX	
	MIN	MAX	A	B	A	B	A	B	A	B
20S	0.1	0.3	6.3	4.0	11.7	7.0	-	-	15.5	-
20	0.1	0.3	10.3	5.6	13.5	9.0	-	-	20.5	-
20R	0.1	0.3	8.1	5.8	13.5	6.2	-	-	20.5	-

GLAND TYPE NUMBERING



GLAND TYPE NUMBERING



- SCALE N.T.S
- ISSUE
- 1. Original
 - 2. Various changes for copper braided cable; revised markings
 - 3. Marking updated to comply with latest 60079 Series & to include ExTD marking.
 - 4. 23/07/09 Updated to include Ex nR II marking.
 - 5. 23/08/12 Full parts list added and notes clarified. Marking updated & now 2 sheet drawing
 - 6. 06/03/14 E8XC*** option added. D8XC option clarified. Type numbering table & Note d amended. Note j, k & L added. E type 20R inner seal range corrected. 4MR part removed. 6MF, 6MM, 4MF & 4MM parts added.

X-REFS: -

- CSFLB3X
- TABFLB3X
- ISSFLB3X
- CSFLATAB
- CAO



PEPPERS CABLE GLANDS LIMITED

STANHOPE ROAD, CAMBERLEY, SURREY, UK.
TEL +44 (0)1276 64232, FAX +44 (0)1276 691752

TITLE ATEX INSTRUMENT RANGE
FLAT CABLE (HEAT TRACE). TYPES E8X**,
E8XC***, D8XC*** & D8X** Sheet 2 of 2

The design and manufacturing information contained in this drawing is the exclusive right of PEPPERS CABLE GLANDS LTD and must not be copied or used for manufacturing purposes without express authority in writing from the said company.

DRG. No.

PCG/ATX/BF

ISSUE 6